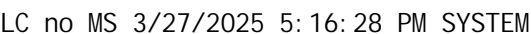


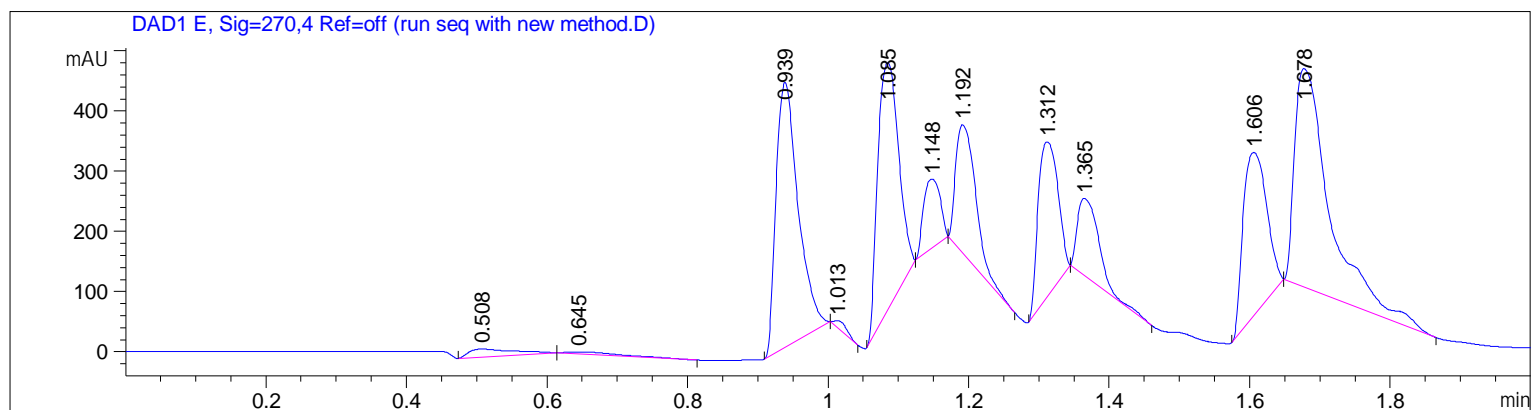
```

Acq. Operator   : SYSTEM                               Seq. Line :    1
Sample Operator : SYSTEM
Acq. Instrument : LC no MS                             Location  :    P1-A-02
Injection Date  : 3/27/2025  5:14:24 PM                Inj       :    1
                                                    Inj Volume: 0.500 µl
Sequence File   : C:\Users\Public\Documents\ChemStation\2\Data\hplc_testing 2025-03-27 17-13-47\hplc_testing.S
Method          : C:\Users\Public\Documents\ChemStation\2\Data\hplc_testing 2025-03-27 17-13-47\GENERAL-POROSHELL-OPT.M (Sequence Method)
Last changed    : 3/27/2025  5:12:32 PM by SYSTEM

```



Sample Name: run seq with new method



=====
 Area Percent Report
 =====

Sorted By : Signal
 Multiplier : 1.0000
 Dilution : 1.0000
 Do not use Multiplier & Dilution Factor with ISTDs

Signal 1: DAD1 A, Sig=210,4 Ref=off

Peak #	RetTime [min]	Type	Width [min]	Area [mAU*s]	Height [mAU]	Area %
1	0.092	BB	0.0500	20.90380	5.81326	0.1115
2	0.182	BB	0.0446	14.90915	4.62165	0.0795
3	0.448	BB	0.0572	667.85333	165.08046	3.5609
4	0.591	BB	0.0760	193.35432	34.73075	1.0309
5	0.729	BB	0.1303	1059.33374	99.44862	5.6483
6	0.939	BB	0.0432	2424.84082	827.96716	12.9290
7	1.084	BB	0.0332	995.79919	499.78842	5.3095
8	1.151	BB	0.0644	5067.46729	1067.38354	27.0193
9	1.313	BB	0.0362	2299.83447	1066.61682	12.2625
10	1.365	BB	0.0331	873.01013	422.10648	4.6548
11	1.606	BB	0.0401	2430.66968	1009.30951	12.9601
12	1.678	BBA	0.0511	2707.01929	787.01129	14.4336

Totals : 1.87550e4 5989.87797

Signal 2: DAD1 B, Sig=230,4 Ref=off

Peak #	RetTime [min]	Type	Width [min]	Area [mAU*s]	Height [mAU]	Area %
1	0.448	BB	0.0336	104.18285	50.34123	1.0615
2	0.586	BB	0.0791	81.53703	13.20137	0.8308
3	0.762	BB	0.1244	256.92126	24.79101	2.6177
4	0.939	BB	0.0335	532.45526	243.80817	5.4251
5	1.012	BB	0.0275	10.14833	5.64819	0.1034
6	1.085	BB	0.0338	1442.01099	691.74927	14.6925
7	1.148	BB	0.0279	370.60547	229.10248	3.7761

Sample Name: run seq with new method

Peak #	RetTime [min]	Type	Width [min]	Area [mAU*s]	Height [mAU]	Area %
8	1.192	BB	0.0346	1173.25952	545.70569	11.9542
9	1.320	BB	0.0385	3428.74170	1231.92236	34.9351
10	1.357	BB	0.0427	327.40854	113.22864	3.3359
11	1.606	BB	0.0388	808.08051	345.75357	8.2334
12	1.677	BBA	0.0500	1279.25830	387.73392	13.0342

Totals : 9814.60975 3882.98589

Signal 3: DAD1 C, Sig=254, 4 Ref=off

Peak #	RetTime [min]	Type	Width [min]	Area [mAU*s]	Height [mAU]	Area %
1	0.448	BB	0.0262	9.69865	5.88671	0.1331
2	0.506	BB	0.0611	61.65384	14.49248	0.8460
3	0.651	BB	0.0672	20.32302	3.72219	0.2789
4	0.939	BB	0.0335	434.84335	199.06339	5.9669
5	1.013	BB	0.0234	7.96710	5.33781	0.1093
6	1.085	BB	0.0331	260.79465	125.99251	3.5786
7	1.148	BB	0.0281	64.20921	39.19859	0.8811
8	1.192	BB	0.0341	210.02231	97.73748	2.8819
9	1.312	BB	0.0336	358.78763	177.30089	4.9233
10	1.360	BB	0.0327	33.98891	17.07286	0.4664
11	1.606	BB	0.0381	1598.18127	688.05615	21.9302
12	1.678	BB	0.0498	4139.05127	1279.14941	56.7960
13	1.814	BBA	0.0318	88.05363	43.11467	1.2083

Totals : 7287.57485 2696.12514

Signal 4: DAD1 D, Sig=310, 4 Ref=off

Peak #	RetTime [min]	Type	Width [min]	Area [mAU*s]	Height [mAU]	Area %
1	0.512	BB	0.0618	51.71803	11.75688	1.1956
2	0.648	BB	0.0929	23.37235	3.28863	0.5403
3	1.085	BB	0.0386	1317.13110	519.20148	30.4502
4	1.196	BB	0.0396	2689.67969	1041.84668	62.1815
5	1.308	BB	0.0334	225.98192	110.54205	5.2244
6	1.677	BB	0.0468	17.64469	5.90850	0.4079

Totals : 4325.52777 1692.54422

Signal 5: DAD1 E, Sig=270,4 Ref=off

Peak #	RetTime [min]	Type	Width [min]	Area [mAU*s]	Height [mAU]	Area %
1	0.508	BB	0.0604	57.05373	13.20749	1.0969
2	0.645	BB	0.0767	20.21950	3.15617	0.3887
3	0.939	BB	0.0335	963.54181	440.03909	18.5242
4	1.013	BB	0.0238	17.77936	11.65342	0.3418
5	1.085	BB	0.0332	850.63928	410.74872	16.3537
6	1.148	BB	0.0283	190.04874	114.88732	3.6537
7	1.192	BB	0.0324	427.86160	213.36531	8.2257
8	1.312	BB	0.0328	501.79672	256.98407	9.6471
9	1.365	BB	0.0354	280.28702	128.70822	5.3886
10	1.606	BB	0.0387	632.61731	271.12537	12.1622
11	1.678	BBA	0.0520	1259.67236	363.28293	24.2174

Totals : 5201.51743 2227.15811

=====
*** End of Report ***